

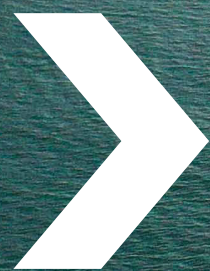


Facing the South China Sea, Kuantan Port is strategically located at the centre of the world's busiest shipping lanes, connecting you to a wealth of global trade opportunities.



GATEWAY TO THE

21st Century Maritime Silk Road



Welcome to Kuantan Port,
your gateway to opportunities.

Kuantan Port is conceived to be the premier deepwater port of Peninsular Malaysia's east coast. It is strategically located along the exciting 21st Century Maritime Silk Road, which connects the major maritime trade routes of Africa, Europe and Oceania as well as South and Southeast Asia.



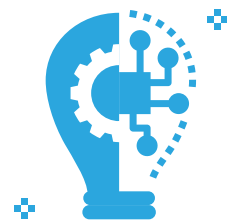
Incorporating the latest in port technology and armed with an integrated logistics network for both land and sea, Kuantan Port is set to connect you to a diverse range of investment opportunities that will take your business to fresh new horizons within Asia Pacific and beyond.

KUANTAN PORT

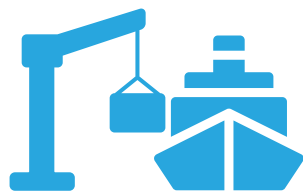
Key Facts



Responsive management by Kuantan Port Consortium Sdn Bhd, which is jointly owned by **IJM Corporation Berhad** and **Beibu Gulf International Port Group**.



State-of-the-art **technology and equipment** to speed up productivity and efficiency



South East Asia's most centrally located deepsea port with **4.63 km BREAKWATER**



Excellent and seamless connectivity via **highways, rail, sea and air**.

710
HECTARES ESTATE

with cargo capacity of

52 **MILLION FWT**

Free trade zone with onsite storage and tax-free warehousing.



Fastest shipping time to **China, Southeast Asia and Northeast Asia**

- Northeast Asia (11 Days)
- China (3 Days)
- Southeast Asia (1 Day)



Deepwater depth of

16m,
accommodating vessels up to **180,000 DWT**

*Deepwater depth of

18m,
accommodating vessels up to **180,000 DWT**

*Future Expansion

CONNECT TO Convenience

Our central location, which faces the South China Sea on Peninsular Malaysia's east coast, has been welcoming merchant ships from around the world since the 3rd Century AD.

By sea, we are enroute from the Asia Pacific to the Straits of Malacca, which is used to reach the Middle East and Europe. We currently offer the fastest shipping time to China as well as to Northeast and Southeast Asia.



With this integrated transport multimodal network of highways, roads, railway and airports, goods can rapidly move from the hinterland or the industrial clusters to the port.



CONNECT TO

Flexibility


Kuantan Port offers one of the most cost effective logistics solutions to our customer base through our ability to handle vessels of up to 180,000 dwt.

We also have a 4.63km breakwater that offers a sheltered harbor for berths to operate safely and efficiently throughout the year, even during the monsoon season.



Our facilities are designed to meet the constantly evolving demands of the industry. Our berths are designed able to handle all sorts of cargo, from general dry bulk to specialised cargo such as palm oil, timber and steel, as well as liquid chemicals and petroleum products.

There are also dedicated facilities for heavy lift enabling our operations to handle almost any consignment.



With ample land readily available around the port, we have the advantage of being able to work with investors to develop systems that add efficiency to the transportation and shipment of goods.

Among those, our clients have tailor made the 9km pipeline that was built directly from their plant located at Gebeng Industrial Estate to the port's terminals for safer and faster transportation of liquid chemicals, and the 12km tubular conveyor belt system that links the iron and steel plant in Malaysia-China Kuantan Industrial Park (MCKIP) to the Deepwater Terminal to reduce air pollutants and emissions.

KUANTAN PORT LAYOUT

MALAYSIA



KUANTAN PORT 2

4.63km NEW BREAKWATER

FUTURE PHASE

ACCESS CHANNEL
KUANTAN PORT 2

BERTH PHASE 1 (1 km)

BERTH PHASE 2 (1 km)

PHASE 1A (400M)

PHASE 1B (600M)

FUTURE PHASE

NDWT PHASE 1A

NDWT PHASE 1B

NDWT PHASE 2 - FUTURE PHASE

1.6km BREAKWATER

ACCESS CHANNEL
KUANTAN PORT 1

TO TERENGGANU &
EAST COAST HIGHWAY

MAIN ACCESS TO NDWT

TANJUNG
GELANG HILL

KUANTAN PORT FREEZONE AREA

TENANT LAND

FUTURE PLANNING

PIPE RACK

KUANTAN PORT 1

CONTAINER YARD

OPEN YARD

WAREHOUSE & OPEN YARD

MAIN GATE

RAILWAY TO KERTEH

TO Kuantan &
GEBENG INDUSTRIAL AREA

TO Kuantan

Facilities & Equipment

Kuantan Port 1		
<div> <div> </div> <div> Multipurpose Berth (Break Bulk & Dry Bulk) </div> <div> 11 Multipurpose Berths </div> <div> 12m Draught (Maximum) </div> <div> Accommodate Vessels: 55,000 displacements tonnes </div> <div> Stevedore supplied by main force contractors </div> </div>	<div> <div> </div> <div> Transit Warehouse </div> <div> Total ground area: 29,189 sqm </div> </div>	<div> <div> </div> <div> Container Storage </div> <div> Total ground slots: 1,750 slots </div> <div> Reefer points: 114 points </div> </div>
<div> <div> </div> <div> Conventional Equipment </div> <div> Forklifts </div> <div> Prime Movers </div> <div> Conventional Trailers </div> <div> Level Luffing Cranes </div> <div> Portable Hoppers and Conveyors </div> <div> Ship Loading Handling System: Capacity 2000 tonne per hour Cargo Density 1.0 </div> </div>	<div> <div> </div> <div> Open Storage </div> <div> Total ground area: 41,250sqm </div> </div> <div> <div> </div> <div> Class 2 Dangerous Goods Yard </div> <div> Maximum capacity: 16 TEUs </div> </div> <div> <div> </div> <div> Container Berth </div> <div> 3 container berths measuring 600 metres </div> <div> 6 container cranes </div> <div> 10 Rubber-Tyred Gantry cranes </div> <div> Capacity of 500,000 TEUs per year </div> </div>	<div> <div> </div> <div> Container Freight Station (CFS) </div> <div> Total ground area: 9,600sqm </div> </div> <div> <div> </div> <div> Liquid Bulk </div> <div> 4 Liquid Berths </div> <div> 4 Liquid Chemical Berths </div> </div> <div> <div> </div> <div> Marine Equipment </div> <div> Tug Boats </div> <div> Pilot Boats </div> </div>
<div> <div> </div> <div> Warehouse Storage </div> <div> 5 x 5,000sqm Warehouses </div> <div> 2 x 3,375sqm Warehouses </div> <div> Total ground area: 32,500sqm </div> </div>	<div> <div> </div> <div> Conventional Equipment </div> <div> Reach Stackers </div> <div> Container Trailers </div> <div> Terminal Tractors </div> </div>	

Facilities & Equipment

Kuantan Port 2	
<div> <div> </div> <div> Multipurpose Berth (Dry Bulk) </div> </div>	<div> <div> </div> <div> Equipment </div> <div> 2 Ship Unloader Cranes (Maximum capacity: 2000 tonne per hour per crane) </div> </div>
<div> <div> </div> <div> PHASE 1 </div> <div> 3 Multipurpose Berths </div> <div> 16m Depth </div> <div> Accommodate Vessels: 180,000 DWT </div> </div>	<div> <div> </div> <div> 2 Stacker Reclaimer Cranes </div> <div> (Reclamation Capacity: 2000 tonne/hour) </div> <div> (Stacking Capacity: 4000 tonne/hour) </div> <div> Conveyor Belt System (Maximum capacity: 4000 tonne per hour crane) </div> </div>
<div> <div> </div> <div> PHASE 2 (Type of cargo to be determined according to future demand) </div> <div> 1km Berth </div> <div> 18m Depth </div> <div> Accommodate Vessels: 180,000 DWT </div> </div>	<div> <div> </div> <div> Storage Yard </div> <div> Phase 1: 42.5 hectares </div> <div> Phase 2: 47 hectares </div> </div>

CONNECT TO Safety

At Kuantan Port, safety is our main priority. While we aim to deliver the fastest turnaround time possible, every precaution has been considered to eliminate potential hazards to personnel, cargo and the environment.





The Marine Services Department, with their team of highly experienced pilots, take full responsibility for the movement of all vessels within port limits, while their trained shore team works around the clock to ensure the vast array of cargo moves safely through the port. On port grounds, our own auxiliary police force secure the area with stringent procedures for entry and activity



CONNECT TO Values

Kuantan Port will be the perfect hub for fast-tracking activities such as trans-shipment, trading, regional distribution, inspection, sampling and related value-added services that include repackaging, relabeling and break bulking.

Our close proximity and links to 3 major Industrial Parks – the tax-free Malaysia-China Kuantan Industrial Park (MCKIP), Gebeng Industrial Estate and Pekan Automotive Park – enable us to provide a dynamic platform for investors who are looking to expand their business in Asia.



International distributors with established sales networks in the region can consolidate their products destined for Malaysia and other Asian countries at our port, saving storage costs in our free zone warehouse and repackaging their products for redistribution.

CONNECT TO Experience

Over the decades, Kuantan Port has built up huge experience and expertise in handling all types of cargo, including out-of-gauge and dangerous freight.

Jointly owned by IJM Corporation Berhad and Beibu Gulf International Port Group - two globally respected organisations in the infrastructure, logistics and port industries - Kuantan Port is backed by the latest in technology and deepwater terminal facilities. Billions have been invested over the last few years to ensure we have all the equipment needed to be the quality link in your supply chain.





Our large team of well-trained employees are always at hand to provide high quality, reliable, efficient cargo handling. Coupled with our solid values and customer-focused approach, Kuantan Port provides infrastructure, skills and a strong global shipping network to connect our clients to myriad trade and investment opportunities.

CONNECT TO Growth

Kuantan Port is a key national asset and a major economic driver for Malaysia's East Coast Economic Region (ECER), an area which is poised to become the country's gateway to the ASEAN region, China and Far East. The potential market of this region is in excess of four billion people, with a combined GDP of USD 17 trillion.





With 90% of the world's trade moving by sea, Kuantan Port plays a key role in complementing local infrastructure. Aside from logistics activities, Kuantan Port also serves as an industrial base that connects the east coast of Peninsular Malaysia to the entire Asia Pacific and beyond.

With the increased investments and trade activities in the East Coast Economic Region (ECER) Special Economic Zone, local communities will enjoy better socio-economic benefits, especially job and entrepreneurial opportunities.





Connect to Opportunities

Supported by excellent port facilities and services, a strong market outreach and an extensive network of global shipping connections, Kuantan Port is well placed to be the premier maritime hub that connects all stakeholders to opportunities.



Kuantan Port Consortium Sdn Bhd (374383-H)

Wisma KPC, KM25 Tanjung Gelang,
P.O Box 199, 25720 Kuantan,
Pahang Darul Makmur, Malaysia

T +60 9 586 3888

F +60 9 586 3777

www.kuantanport.com.my